

Raru whakarato: Ngā pire citalopram

(*Me whakahua 'sit-al-oh-pram'*)

Me kī e tino whakamahia ana te citalopram hei whakamaimoa i te pāpōuri. Mai i te Oketopa 2022, ka whakararua te whakarato o te momo onāiane, te Citalopram PSM. Hei whakarite ka taea tonu e koe te kai ō rongoā, kua whakakapihia te Citalopram PSM e tētahi momo kē.

He aha te citalopram hou?

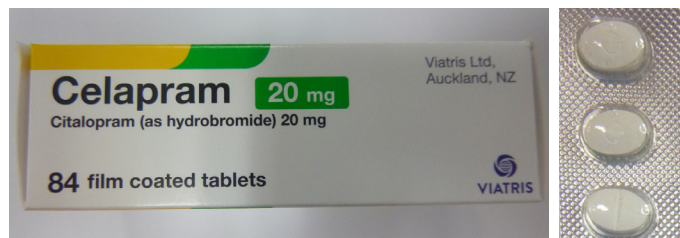
Ko **Celapram** te momo hou. (Me whakahua 'sel-a-pram')

He rerekē te āhua o ngā pire me te tākai a Celapram i te Citalopram PSM's. Engari, he ōrite ngā kai hohe o roto, ā, he ōrite te mahi.

Kua whakaaetia a Celapram e Medsafe, ā, kua whakaratoa i Aotearoa i mua.



Citalopram PSM



Celapram

He mea nui tonu kia kai tonu i te citalopram

Mēnā he pātai āu mō te huringa ki Celapram me kōrero ki tō kaiwhakarato hauora. Kaua e whakamutua te kai i ō rongoā. Do not stop taking your medicine. Ki te mutu tonu tō kai i te citalopram ka pā mai pea he pānga kino pērā i te pōātinitini, te anipā me ngā raruraru moe.



Kia mōhio

Mēnā he 10mg (haurua o te pire) tō pota, he rārangi wāhi tō te Celapram kia pai ai te wāhi mai kia haurua.



 Mō ētahi atu mōhiohio mō te celapram, haere ki [pharmac.govt.nz/citalopram](https://www.pharmac.govt.nz/citalopram)